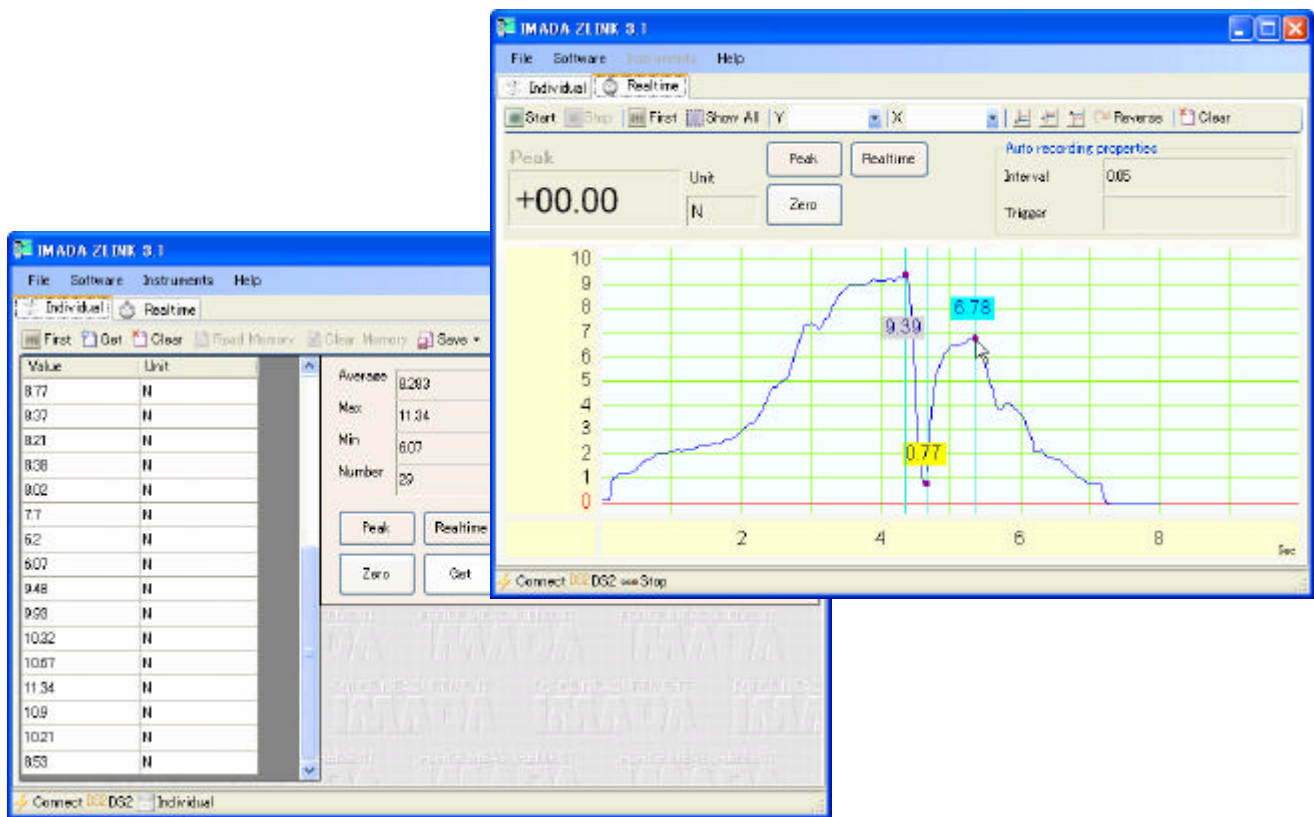


Data acquisition software

ZLINK3

Data Acquisition Software



This image is for reference purpose only, and is subject to change without prior notice.

[Usage]

- Recording and analysis of measured data
- Reading and saving of memory data from a force gauge, as well as setting of a force gauge

[Features]

- Sends data measured by a digital force gauge such as Z, DS2 series, and etc. to a PC via RS-232C connection cable and records the transition of force or torque
- Visualizes measured data in a graph
- Can change the setting of the various functions of a force gauge
- An optional connection cable required

[Main functions]

Data recording	<p>Individual acquisition mode: records data one by one manually</p> <ul style="list-style-type: none"> - Data can be sent to PC by pressing SEND button of the force gauge. - Read data from the memories of the force gauge. <p>Realtime recording mode: records data automatically at a pre-set interval</p> <ul style="list-style-type: none"> - Recording interval can be specified. <p>Start / stop of recording can be controlled by setting “trigger” force values.</p>
Saving data	Save data as CSV file
Printing reports	<p>A Graphic chart and its statistics (maximum, minimum and average)</p> <p>Up to 2 of marked points and statistics between them</p>
Force gauge operation	<p>Zero reset, Peak mode</p> <p>Selecting measuring unit</p> <p>Comparator setting (only applicable force gauges)</p> <p>Selecting display direction (only applicable force gauges)</p>

[Specifications]

Operating environment	<p>CPU: Pentium or better</p> <p>OS: Windows 2000 SP3 or later, XP SP2 or later, Server 2003</p> <p>Microsoft Internet Explorer 5.01 or later</p> <p>Microsoft .NET Framework 2.0 Redistribution package (included)*</p>
Compatible force gauges	<p>Digital force gauge Z / DS2 / DPZ / DPS / DPX series</p> <p>Handy type digital torque gauge HTG / HTG2 series</p> <p>Screw cap tester DTX / DTX2 series</p>
Input interval	<p>Min. 0.02 sec. (adjustable)</p> <p>? may differ depending on a PC</p>
Connecting cable (Optional)	<p>IMADA RS-232C cable</p> <p>CB-203: for DS2 / DPS / DPX series</p> <p>CB-204: for Z / DPZ / HTG / DTX series</p>

* For details on “.NET Framework”, please refer to Microsoft web site: <http://msdn2.microsoft.com/>

[Remarks]

- * This software is a copyrighted work of Imada Co., Ltd. and is protected by the Japanese copyright laws and international treaty provisions. Any reproduction or redistribution of this software in full or in part without permission is expressly prohibited by law.
- * Return of this software after purchase is not accepted. Please confirm working conditions and operating environment prior to purchase.