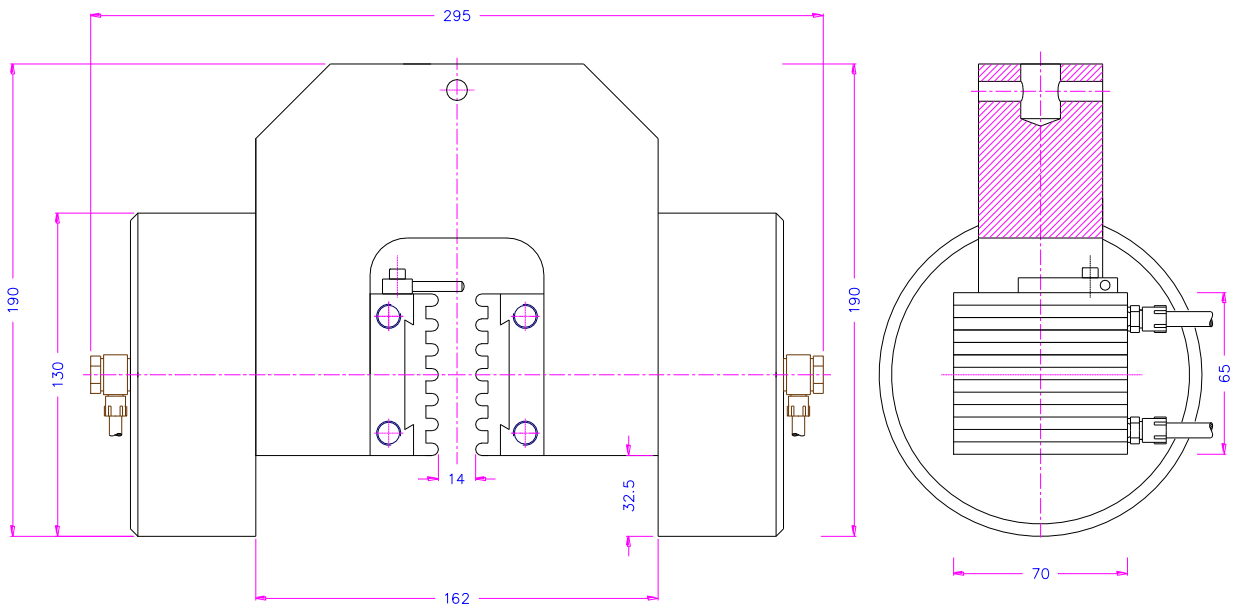
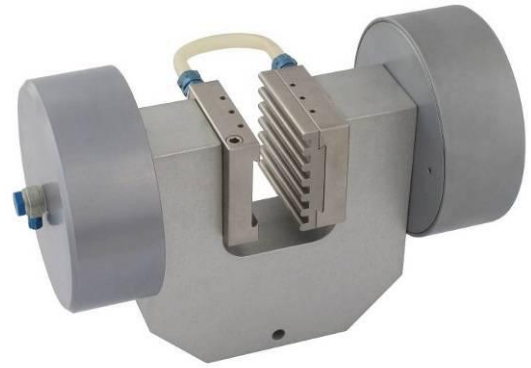


Pneumatic grip with 2 pneumatic rods

Insert jaw carriers have special holes to connect water cooling system to test bitumen sheeting.
 For bitumen testing, insert jaw carriers THS132-GT and special wave insert jaws THS132-EBB1 are needed.

- Item no.:** THS132
- Clamping force:** 7 kN at 7 bar
16 kN at 16 bar with TH216 compressor
- Pneumatic connection:** 1/8"
- Coupling:** Af15.9
Further coupling sizes on request
- Body:** Anodized aluminium
- Temperature range:** 0 ... +70°C
- Weight:** 4.5 kg without jaws
- Scope of delivery:** 1 pair of grips without jaws



THS132+EBB1

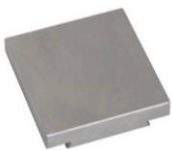
Insert jaws for THS132:

For a quick insert jaw change, a carrier is needed (THS132-GT)
 Scope of delivery: 1 set = 4 jaws
 Jaws faces with other dimensions and surface coatings available on request

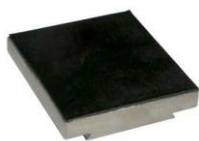


THS132-GT

Item-No.	Surface	Clamping surface h x w	Opening	Weight per pair
THS132-GT	Carrier			0.96 kg
THS132-EBB1	Special wave insert jaws for bitumen testing	65 x 70 mm	0 - 14 mm	0.68 kg
THS132-EB	Blank (smooth) insert jaws	65 x 70 mm	0 - 14 mm	0.86 kg
THS132-EBG	Rubber-faced insert jaws	65 x 70 mm	0 - 12 mm	0.88 kg
THS132-EBP	Pyramid (serrated) insert jaws	65 x 70 mm	0 - 14 mm	0.86 kg



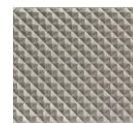
- THS132-EB**
- Steel blanks without coating
 - Suitable for own further treatments



- THS132-EBG**
- 1 mm rubber coating (NBR)
 - Nickel-plated



- THS132-EBB1**
- Hardened steel 58HRC
 - Nickel-plated
 - Applicable for bitumen testing



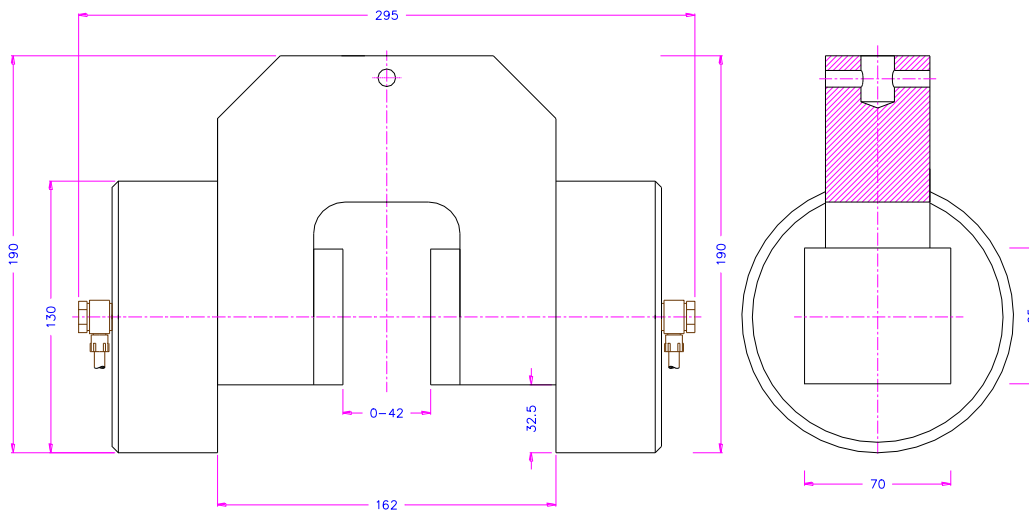
- THS132-EBP**
- Pyramids 1.2x45
 - Hardened steel 58HRC
 - Nickel-plated

Examples for customized solutions:



THS132-EBB1-100

Extra wide special wave insert jaws for testing of bitumen sheeting
65 x 100 mm (h x w)



THS132-BPS42

Opening 0 - 42 mm, regular (non-insert) pyramid jaws

Pneumatic accessories:**TH205-1 Foot pedals**

None locking: The jaws of the grip open by pressing the foot pedal and close after removing the foot from the pedal.

Scope of delivery: 1 pair of foot switches including tubes and fittings

**TH205-2 Foot pedals**

With locking function: The jaws of the grip open by pressing the foot pedal and remain opened after removing the foot from the pedal. The jaws close by pressing the pedal one more time.

Scope of delivery: 1 pair of foot switches including tubes and fittings

**TH205-PR10bar Pressure regulator**

Optional for TH205-1 or TH205-2

To adjust air pressure: 1-10 bar

TH205-PR16bar Pressure regulator

Optional for TH205-1 or TH205-2

To adjust air pressure: 1-16 bar

**TH205-3 Hand switches**

With locking function: The jaws of the grip close by pulling the handle and remain closed. The jaws open by pushing the handle back.

Scope of delivery: 1 unit of hand switches including tubes and fittings

**TH205-4-1/8" Hand switches with 1/8" connection**

With locking function (see TH205-3)

The hand switches are directly mounted at the grips. 3/2 directional valve

Scope of supply: 2 hand switches including tubes and fittings

If ordered together with grips, hand switches will be mounted directly on the grips.

**TH216 Silent compressor for laboratories, oil-lubricated, with pressure reducer**

Max pressure 16 bar; 230 V/50 Hz; noise level: 38 dB(A)

Motor: 0.13 kW; displacement: 17 l/min; tank size 3.5 l

Dimensions: 340x290x340 mm (L x W x H); weight 18 kg