

FRACTURE MECHANICS CLEVIS GRIPS

to test linear-elastic plane-strain fracture toughness and tensile properties.

Clevis grips are available in various sizes and forms.



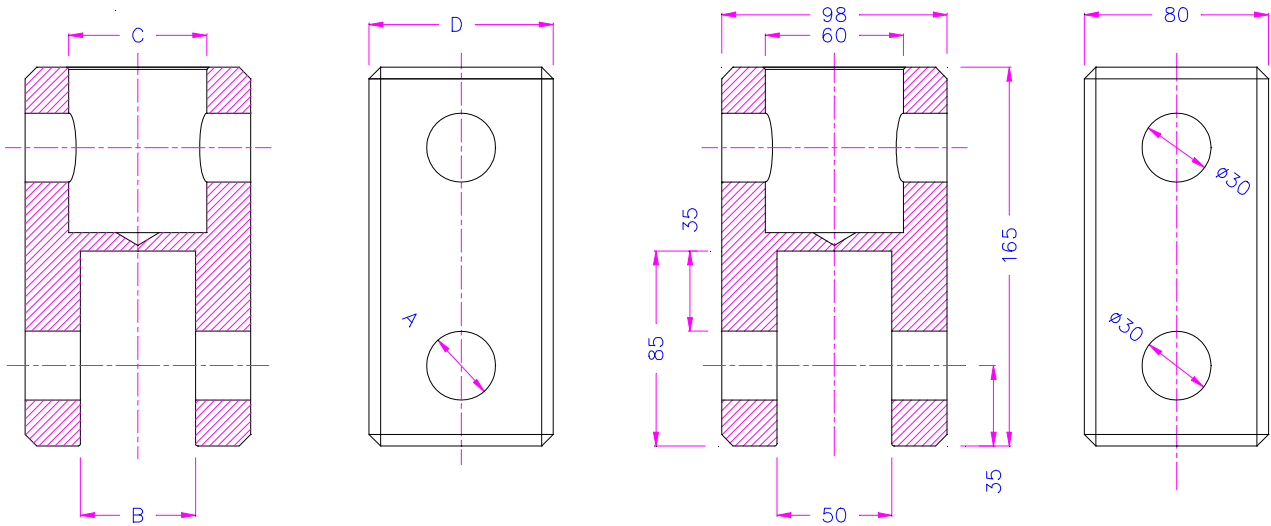
Item no.: THS353-AxB-C-D

A = pin size
 B = opening size
 C = coupling size
 D = style

Temperature range: 0 ... +70°C
 Further temperature ranges on request

Scope of supply: 1 pair

D= C rectangle Rechteck
 D= Q quadrat
 D= R Round



THS353-AxB-C-D

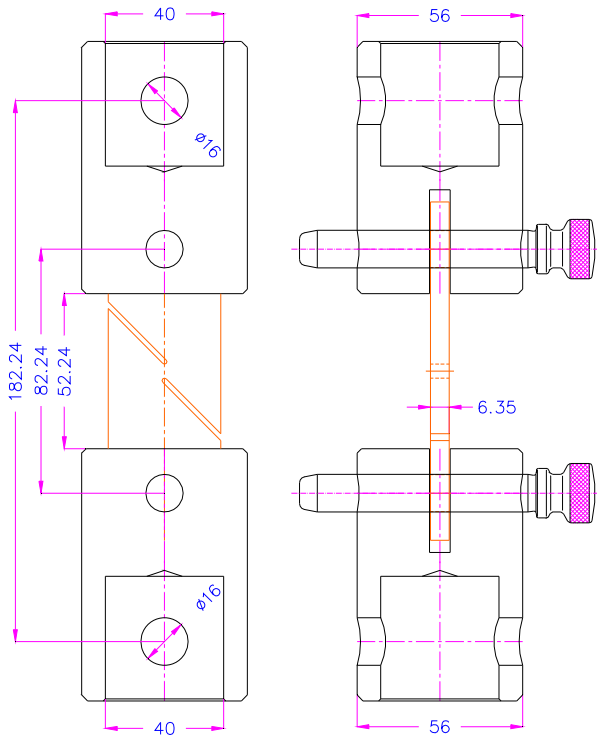
THS353-30x50-AF60-C98x80

Examples for THS353 grips:



ASTM E399

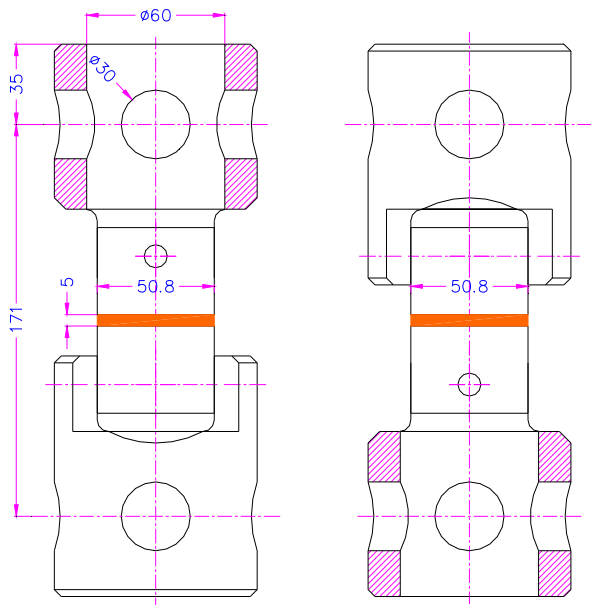
Standard Test Method for Linear-Elastic Plane-Strain Fracture Toughness K_{Ic} of Metallic Materials



ASTM B831

ASTM B831

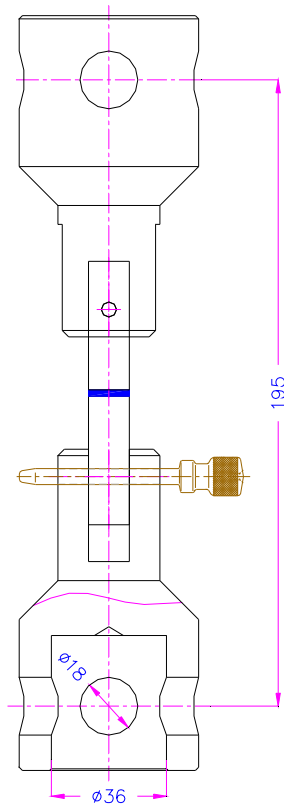
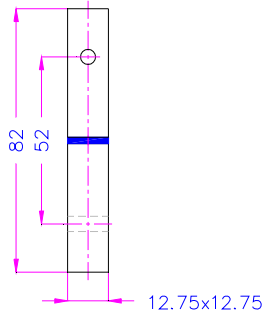
Standard Test Method for Shear Testing of Thin Aluminum Alloy Products



ASTM C297

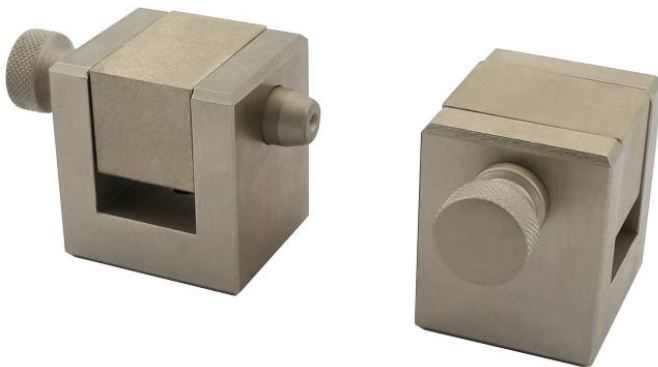
Standard Test Method for Flatwise Tensile Strength of Sandwich Constructions

Sample



ASTM D2095

Standard Test Method for Tensile Strength of Adhesives by Means of Bar and Rod Specimens



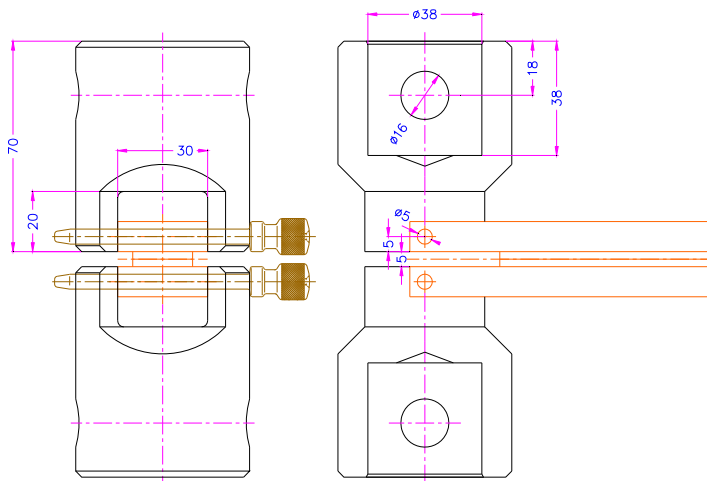
ASTM D5528

Standard Test Method for Mode I Interlaminar Fracture Toughness of Unidirectional Fiber-Reinforced Polymer Matrix Composites



ASTM F1717

Standard Test Methods for Spinal Implant Constructs in a Vertebrectomy Model



EN 12814-4 (Fig. 5)

Testing of welded joints of thermoplastics semi-finished products - Part 4: Peel test



ISO 6259-3 (Type 3)

Thermoplastics pipes -- Determination of tensile properties -- Part 3: Polyolefin pipes

ISO 13953 (Type A, Type B)

Polyethylene (PE) pipes and fittings -- Determination of the tensile strength and failure mode of test pieces from a butt-fused joint



ISO 6259-3 (Type 3)

Thermoplastics pipes -- Determination of tensile properties -- Part 3: Polyolefin pipes

ISO 13953 (Type A, Type B)

Polyethylene (PE) pipes and fittings -- Determination of the tensile strength and failure mode of test pieces from a butt-fused joint